

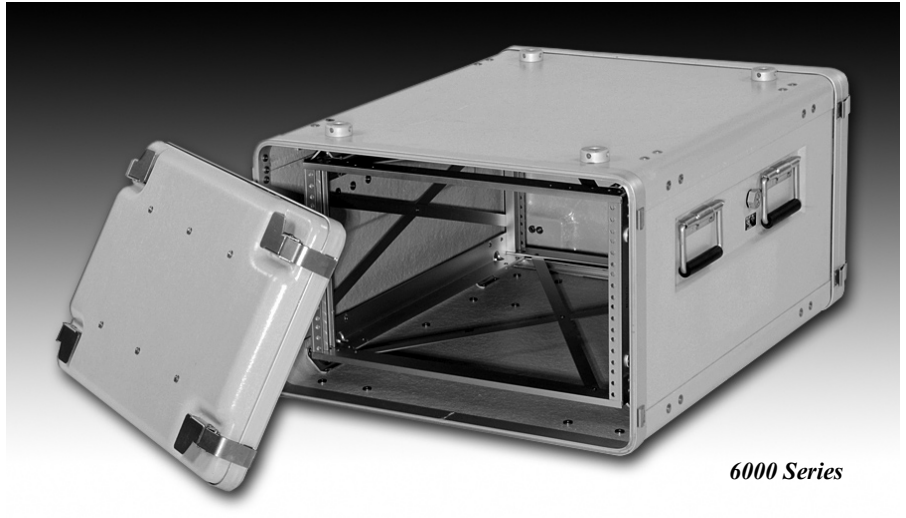
ECS Composites

6000 Series - FRP Composite Rackmount Cases

Features and Performance Highlights

Photo Highlights

- **Riveted Aluminum CEA-310 Rack with Eight Diagonally Attached Shock Mounts**
- **10-32 Nut-Bar Fasteners for Equipment Panels**
- **Two Removable Covers**
- **External Draw Pull Latches**
- **Water Tight Closures**
- **Case-to-Case Stacking Rails and Feet with Locking Pins**
- **Recessed Hardware**



6000 Series

Maximum Shock and Vibration Protection – 6000 Series rackmount cases provide maximum shock and vibration protection for unusually fragile electronic equipment. 6000 Series cases are larger than 5000 Series cases to provide even greater sway space for absorption of impact energy. Shock and vibration attenuation is provided by eight diagonally installed shock mounts which are longer than shock mounts used in 5000 Series cases.

Increased Cube and Weight – 6000 Series rackmount cases are extremely durable, field portable enclosures with increased interior space for maximum shock mount effectiveness. High impact absorption characteristics of the compression molded FRP composite exteriors adds to enhanced shock and vibration protection for enclosed equipment.

Total Protection From The World's Environments – Water tight rackmount cases provide protection from moisture, salt spray, sand and dust throughout the world's climate extremes. Impervious to fuels, oils and solvents, they can also be decontaminated if exposed to chemical warfare agents.

Broad Range Of Sizes – Standard 6000 Series rackmount case sizes are available from 3U-14U in rack height and front-to-back rack depths of 8.63", 13.78", 18.90", 24.00" and 30.00". Custom rackmount sizes can also be supplied.

Equipment Weight Range – 6000 Series 19-inch rackmount cases are designed for equipment weights up to 120 pounds. 6000 Series cases and racks can be custom reinforced and supplied with additional shock mounts to accommodate and protect equipment weighing up to 200 pounds.

CEA-310-E Compliant Equipment Racks – 6000 Series CEA-310-E compliant shock mounted interior racks are manufactured from precision machined aluminum extrusions. 19-inch, riveted aluminum racks provide multiple equipment mounting capabilities. Racks have equipment mounting holes in front and rear vertical members and interior vertical rails for attachment of slides and brackets. Two rackmount fastener types are available - thread locking 10-32 clip nuts or stainless steel nut bars with 10-32 tapped holes.

Shock Mounted Equipment Protection – 19-inch CEA-310-E compliant racks are suspended within the center bodies of 6000 Series rackmount cases using diagonally installed elastomeric shock mounts. Shock mounts are configured for the weight and center of gravity of the installed equipment, and they provide uniform performance in all three axes. Optional shock mount configurations and spring rates can be provided to support a broad range of equipment weights and equipment centers-of-gravity.

Unrestricted Equipment Operation – Cases are stackable with covers installed or removed. With covers removed, electronic equipment is accessible front and back for ease of cabling and operation. Exterior stacking features can be provided with quick release hardware to secure one case on top of another.

Quick Cover Removal and Installation – 6000 Series rackmount cases have gasketed 6063 aluminum closures. They are available with two alternate latch styles – externally operated lever-action latches or ECS' unique internally engaging rotary draw-pull latches. Both closure systems permit rapid removal and installation of covers while the cases are stacked.

ECS Composites

6000 Series - FRP Composite Rackmount Cases

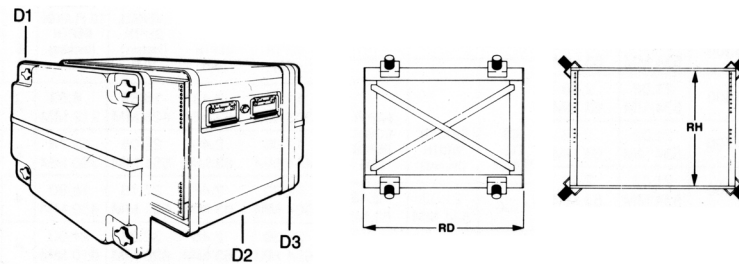
Features and Performance Highlights

Military Grade – 6000 Series rackmount cases exceed the requirements of military specifications for transportable cases. Performance verification testing to MIL-STD 810 is routinely performed at ECS Composites. Originally qualified in 1962 under the severe performance requirements of MIL-C-4150.

Extremely Durable FRP Thermoset Composites – Compression molded 65% glass fiber reinforced polyester case shells provide exceptional impact resistance and rugged durability at temperatures which exceed a range of -65° F to +185° F. Optional, premium priced, polyester/ fiberglass composites can be compression molded by ECS to achieve super-light rackmount case weights.

Stainless Steel Hardware – Exterior latches and handles are stainless steel and recessed for maximum protection. Anodized aluminum extrusions prevent corrosion. An automatic air pressure relief valve protects the case and enclosed electronic equipment from rapid compression and decompression during transportation.

Colors and Options – FRP rackmount cases can be manufactured in most colors, including MIL-STD-595 colors. Numerous options and accessories are available. They include almost everything imaginable...from casters, slides, drawers, and work surfaces, to air conditioners, ventilation systems, and exterior plug receptacles. Conductive materials can even be molded into the composite case shells to provide EMI shielding in accordance with MIL-STD-461.

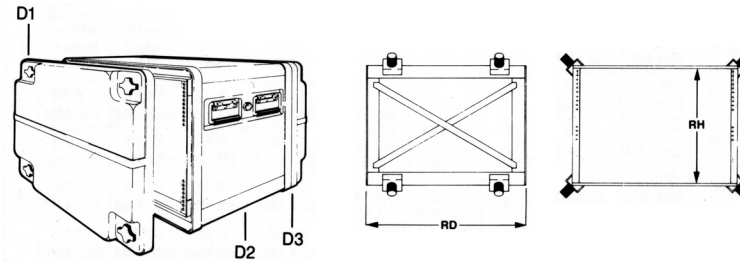


ECS Case Part Number	Rack Height (Units)	Rack Height Inside (RH) (Inch)	Flange To Flange Depth (RD) (Inch)	Outside Case Height (Inch)	Outside Case Width (Inch)	Front Cover Depth (D1) (Inch)	Center Body Depth (D2) (Inch)	Rear Cover Depth (D3) (Inch)	Overall Outside Depth (Inch)	Case Weight (Lb)
6103	3	5.25	8.63	10.50	24.06	2.48	14.44	2.48	19.40	31.6
6104	4	7.00	8.63	12.25	24.06	2.48	14.44	2.48	19.40	33.3
6105	5	8.75	8.63	14.00	24.06	2.48	14.44	2.48	19.40	33.7
6106	6	10.50	8.63	15.75	24.06	2.48	14.44	2.48	19.40	36.7
6107	7	12.25	8.63	17.50	24.06	2.48	14.44	2.48	19.40	38.4
6108	8	14.00	8.63	19.25	24.06	2.48	14.44	2.48	19.40	40.1
6109	9	15.75	8.63	21.00	24.06	2.48	14.44	2.48	19.40	41.8
6110	10	17.50	8.63	22.75	24.06	2.48	14.44	2.48	19.40	43.5
6111	11	19.25	8.63	24.50	24.06	2.48	14.44	2.48	19.40	45.2
6112	12	21.00	8.63	26.25	24.06	2.48	14.44	2.48	19.40	45.6
6113	13	22.75	8.63	28.00	24.06	2.48	14.44	2.48	19.40	48.6
6114	14	24.50	8.63	29.75	24.06	2.48	14.44	2.48	19.40	50.3

ECS Composites

6000 Series - FRP Composite Rackmount Cases

Features and Performance Highlights



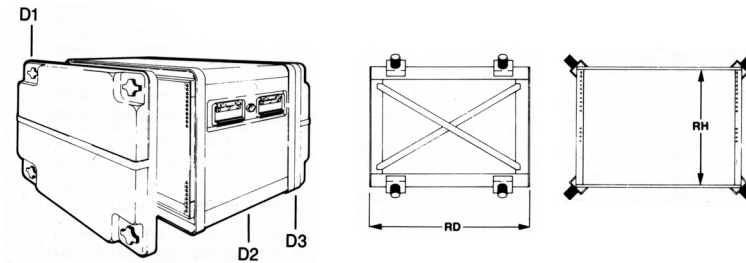
ECS Case Part Number	Rack Height (Units)	Rack Height Inside (RH) (Inch)	Flange To Flange Depth (RD) (Inch)	Outside Case Height (Inch)	Outside Case Width (Inch)	Front Cover Depth (D1) (Inch)	Center Body Depth (D2) (Inch)	Rear Cover Depth (D3) (Inch)	Overall Outside Depth (Inch)	Case Weight (Lb)
6303	3	5.25	13.78	10.50	24.06	2.48	19.59	2.48	24.55	35.0
6304	4	7.00	13.78	12.25	24.06	2.48	19.59	2.48	24.55	36.8
6305	5	8.75	13.78	14.00	24.06	2.48	19.59	2.48	24.55	37.3
6306	6	10.50	13.78	15.75	24.06	2.48	19.59	2.48	24.55	40.4
6307	7	12.25	13.78	17.50	24.06	2.48	19.59	2.48	24.55	42.2
6308	8	14.00	13.78	19.25	24.06	2.48	19.59	2.48	24.55	44.1
6309	9	15.75	13.78	21.00	24.06	2.48	19.59	2.48	24.55	45.9
6310	10	17.50	13.78	22.75	24.06	2.48	19.59	2.48	24.55	47.7
6311	11	19.25	13.78	24.50	24.06	2.48	19.59	2.48	24.55	49.5
6312	12	21.00	13.78	26.25	24.06	2.48	19.59	2.48	24.55	50.0
6313	13	22.75	13.78	28.00	24.06	2.48	19.59	2.48	24.55	53.2
6314	14	24.50	13.78	29.75	24.06	2.48	19.59	2.48	24.55	55.0

ECS Case Part Number	Rack Height (Units)	Rack Height Inside (RH) (Inch)	Flange To Flange Depth (RD) (Inch)	Outside Case Height (Inch)	Outside Case Width (Inch)	Front Cover Depth (D1) (Inch)	Center Body Depth (D2) (Inch)	Rear Cover Depth (D3) (Inch)	Overall Outside Depth (Inch)	Case Weight (Lb)
6503	3	5.25	18.90	10.50	24.06	2.48	24.70	2.48	29.66	37.5
6504	4	7.00	18.90	12.25	24.06	2.48	24.70	2.48	29.66	39.4
6505	5	8.75	18.90	14.00	24.06	2.48	24.70	2.48	29.66	40.0
6506	6	10.50	18.90	15.75	24.06	2.48	24.70	2.48	29.66	43.3
6507	7	12.25	18.90	17.50	24.06	2.48	24.70	2.48	29.66	45.2
6508	8	14.00	18.90	19.25	24.06	2.48	24.70	2.48	29.66	47.2
6509	9	15.75	18.90	21.00	24.06	2.48	24.70	2.48	29.66	49.1
6510	10	17.50	18.90	22.75	24.06	2.48	24.70	2.48	29.66	51.0
6511	11	19.25	18.90	24.50	24.06	2.48	24.70	2.48	29.66	53.0
6512	12	21.00	18.90	26.25	24.06	2.48	24.70	2.48	29.66	53.6
6513	13	22.75	18.90	28.00	24.06	2.48	24.70	2.48	29.66	56.8
6514	14	24.50	18.90	29.75	24.06	2.48	24.70	2.48	29.66	58.8

ECS Composites

6000 Series - FRP Composite Rackmount Cases

Features and Performance Highlights



ECS Case Part Number	Rack Height (Units)	Rack Height Inside (RH) (Inch)	Flange To Flange Depth (RD) (Inch)	Outside Case Height (Inch)	Outside Case Width (Inch)	Front Cover Depth (D1) (Inch)	Center Body Depth (D2) (Inch)	Rear Cover Depth (D3) (Inch)	Overall Outside Depth (Inch)	Case Weight (Lb)
6703	3	5.25	24.00	10.50	24.06	2.48	29.80	2.48	34.76	40.0
6704	4	7.00	24.00	12.25	24.06	2.48	29.80	2.48	34.76	42.1
6705	5	8.75	24.00	14.00	24.06	2.48	29.80	2.48	34.76	42.8
6706	6	10.50	24.00	15.75	24.06	2.48	29.80	2.48	34.76	46.2
6707	7	12.25	24.00	17.50	24.06	2.48	29.80	2.48	34.76	48.2
6708	8	14.00	24.00	19.25	24.06	2.48	29.80	2.48	34.76	50.3
6709	9	15.75	24.00	21.00	24.06	2.48	29.80	2.48	34.76	52.3
6710	10	17.50	24.00	22.75	24.06	2.48	29.80	2.48	34.76	54.4
6711	11	19.25	24.00	24.50	24.06	2.48	29.80	2.48	34.76	56.4
6712	12	21.00	24.00	26.25	24.06	2.48	29.80	2.48	34.76	57.2
6713	13	22.75	24.00	28.00	24.06	2.48	29.80	2.48	34.76	60.5
6714	14	24.50	24.00	29.75	24.06	2.48	29.80	2.48	34.76	62.6

ECS Case Part Number	Rack Height (Units)	Rack Height Inside (RH) (Inch)	Flange To Flange Depth (RD) (Inch)	Outside Case Height (Inch)	Outside Case Width (Inch)	Front Cover Depth (D1) (Inch)	Center Body Depth (D2) (Inch)	Rear Cover Depth (D3) (Inch)	Overall Outside Depth (Inch)	Case Weight (Lb)
6903	3	5.25	30.00	10.50	24.06	2.48	35.80	2.48	40.76	43.1
6904	4	7.00	30.00	12.25	24.06	2.48	35.80	2.48	40.76	45.2
6905	5	8.75	30.00	14.00	24.06	2.48	35.80	2.48	40.76	47.4
6906	6	10.50	30.00	15.75	24.06	2.48	35.80	2.48	40.76	49.6
6907	7	12.25	30.00	17.50	24.06	2.48	35.80	2.48	40.76	51.8
6908	8	14.00	30.00	19.25	24.06	2.48	35.80	2.48	40.76	53.9
6909	9	15.75	30.00	21.00	24.06	2.48	35.80	2.48	40.76	56.1
6910	10	17.50	30.00	22.75	24.06	2.48	35.80	2.48	40.76	58.3
6911	11	19.25	30.00	24.50	24.06	2.48	35.80	2.48	40.76	60.5
6912	12	21.00	30.00	26.25	24.06	2.48	35.80	2.48	40.76	61.4
6913	13	22.75	30.00	28.00	24.06	2.48	35.80	2.48	40.76	64.9
6914	14	24.50	30.00	29.75	24.06	2.48	35.80	2.48	40.76	70.7