

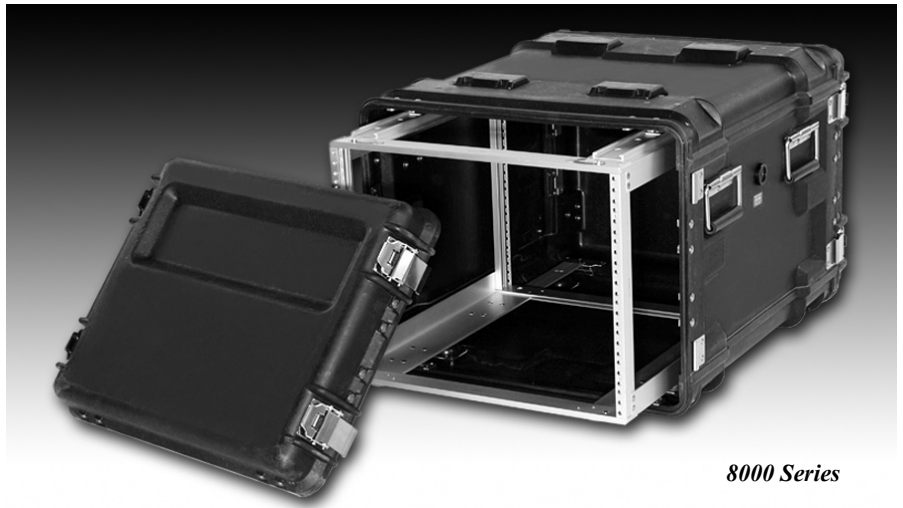
ECS Composites

8000 Series - TSC Composite Rackmount Cases

Features and Performance Highlights

Photo Highlights

- **TSC Composite Case Exterior**
- **Slide-Out Riveted Aluminum CEA-310 Rack with Eight Multi-Axis Shock Mounts**
- **10-32 Nut-Bar Fasteners for Equipment Panels**
- **Two Removable Covers**
- **External Draw Pull Latches**
- **Water Tight Closures**
- **Molded-in Case-to-Case Stacking Features**
- **Recessed Hardware**



8000 Series

The Original Slide-Out Rackmount Cases – 8000 Series rackmount cases provide the same exceptional equipment protection as 7000 Series cases, and they have the added utility of slide mounted 19-inch racks. The slide-out rack can be unlatched and removed from the outer case when the rack is empty or when it is filled with electronic equipment. Slide-out 19-inch racks allow unlimited access to electronic equipment during installation and integration and for maintenance.

Military Rackmount Cases – The Warfighter's Choice - 8000 Series rackmount cases are the toughest, lightest, smallest, most protective, portable military electronic enclosures anywhere. They are extremely durable in any environment in the world. War tested. Battlefield durable. ECS rackmount cases have been the choice of American warfighters for over 40-years.

Comprehensive Shock & Vibration Protection – 8000 Series rackmount cases provide excellent shock and vibration protection for electronic equipment of all types. TSC composite materials are very rigid under heavy stacking loads and resilient during impacts. Approximately one third of all impact energy is absorbed by the deflection of the TSC enclosure walls before impact forces are transferred to the shock mounts. Final shock and vibration attenuation is then provided by eight multi-axis shock mounts.

Optimum Cube and Weight – 8000 Series cases provide maximum sway space inside the smallest, lightest, toughest rackmount enclosures available anywhere. Enhanced sway space for the rack allows shock mounts to provide maximum shock and vibration protection for the equipment. 8000 Series rackmount cases don't waste a single cubic inch of volume while providing maximum attenuation of impact energy and unequalled shock and vibration protection for enclosed equipment.

The Ultimate Composite Case Material – TSC – 8000 Series rackmount cases are manufactured from ECS' incredibly strong TSC composite. Using compression molding presses up to 1,200-tons in capacity, ECS manufactures these cases of the same composite materials used for car bumpers and military truck components. TSC case shells provide extraordinary impact resistance and rugged durability at temperatures which exceed a range of -65° F to +185° F.

Total Protection From The World's Environments – Water tight TSC rackmount cases provide protection from moisture, salt spray, sand and dust throughout the world's climate extremes. Impervious to fuels, oils and solvents, they can also be decontaminated if exposed to chemical warfare agents.

Broad Range Of Sizes – 8000 Series rackmount case sizes are available from 3U-20U in rack height and front-to-back rack depths of 20.00", 24.00" and 30.00". TSC covers are available in two different depths.

Equipment Weight Range – Standard 8000 Series 19-inch rackmount cases are designed for equipment weights up to 120 pounds. 8000 Series cases and their riveted aluminum racks can be custom reinforced and supplied with additional shock mounts to accommodate and protect equipment weighing up to 300 pounds.

CEA-310-E Compliant Equipment Racks – 8000 Series CEA-310-E compliant shock mounted interior racks are manufactured from precision machined aluminum extrusions. 19-inch, riveted aluminum racks provide multiple equipment mounting capabilities. Racks have equipment mounting holes in front and rear vertical members and interior vertical rails for attachment of slides and brackets. Two rackmount fasteners type are available - Thread locking 10-32 clip nuts or stainless steel nut bars with 10-32 tapped holes.

ECS Composites

8000 Series - TSC Composite Rackmount Cases

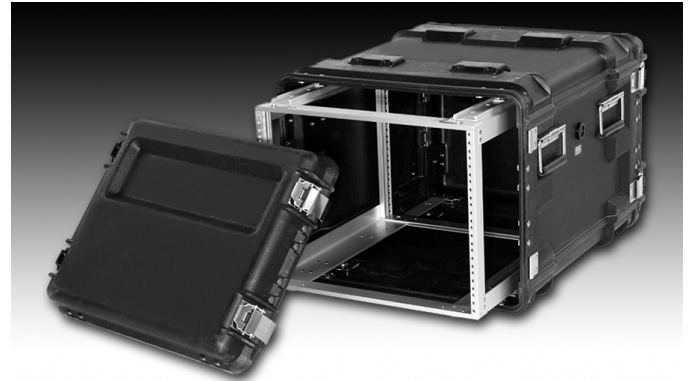
Features and Performance Highlights

Shock Mounted Equipment Protection – 19-inch CEA-310-E compliant racks are suspended within the center bodies of 8000 Series rackmount cases using eight multi-axis elastomeric shock mounts. Shock mounts are configured for the weight and center of gravity of the installed equipment, and they provide uniform performance in all three axes. Optional shock mount configurations and spring rates can be provided to support a broad range of equipment weights and equipment centers-of-gravity.

Unrestricted Equipment Operation – Cases are stackable with covers installed or removed. With covers removed, electronic equipment is accessible front and back for ease of cabling and operation. Exterior stacking features securely engage and prevent shifting of cases. Optional case-to-case latches are available to secure stacked cases together, but they rotate for retention during case shipment.

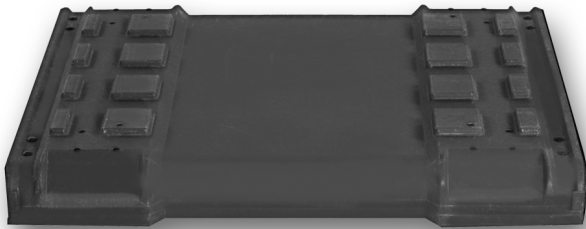
Quick Cover Removal and Installation – Externally operated draw pull latches permit rapid removal and installation of covers while the cases are stacked. 8000 Series rackmount cases have molded-in male/female closure features that are effectively gasketed.

TSC Rackmount Cases Stack with Loadmaster Storage Cases – 8000 Series rackmount cases are available with optional Loadmaster™ stacking features. These features allow 8000 Series rackmount cases to stack together and interlock with ECS Loadmaster™ rotational molded transit cases and storage cases. Set-up of military electronic systems has never been easier or more secure. Warehouse storage or palletized shipment of rackmount cases and transit cases has never been safer or more efficient.



Stainless Steel Hardware – Exterior latches, handles, custom brackets and rivets are stainless steel and are recessed for maximum protection. Interior aluminum extrusions are anodized to prevent corrosion. An automatic air pressure relief valve protects the case and enclosed electronic equipment from rapid compression and decompression during transportation.

Colors and Options – ECS 8000 Series rackmount cases are available in military colors. Options are available including everything imaginable...from casters, slides, drawers, and work surfaces, to air conditioners, ventilation systems, and exterior plug receptacles. Shielded racks can be supplied to provide EMI protection in accordance with MIL-STD-461.

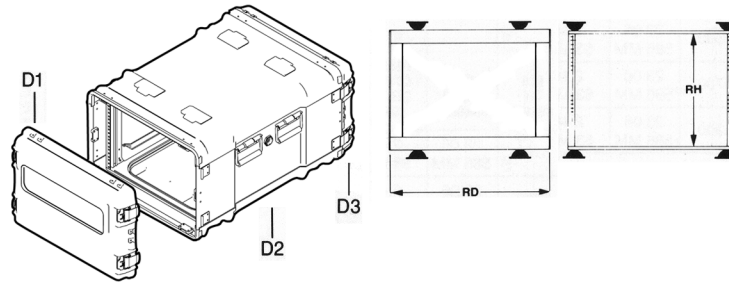


*Optional Loadmaster™
stacking features*

ECS Composites

8000 Series - TSC Composite Rackmount Cases

Features and Performance Highlights

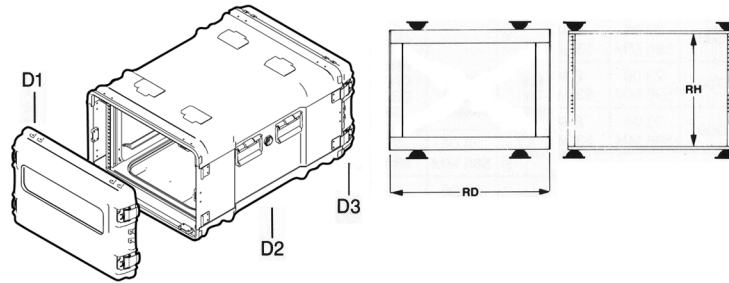


ECS Case Part Number	Rack Height (Units)	Rack Height Inside (RH) (Inch)	Flange To Flange Depth (RD) (Inch)	Outside Case Height (Inch)	Outside Case Width (Inch)	Front Cover Depth (D1) (Inch)	Center Body Depth (D2) (Inch)	Rear Cover Depth (D3) (Inch)	Overall Outside Depth (Inch)	Case Weight (Lb)
8303	3	5.25	20.00	9.34	22.47	3.00	24.00	3.00	30.00	36.4
8304	4	7.00	20.00	11.09	22.47	3.00	24.00	3.00	30.00	38.2
8305	5	8.75	20.00	12.84	22.47	3.00	24.00	3.00	30.00	40.2
8306	6	10.50	20.00	14.59	22.47	3.00	24.00	3.00	30.00	43.4
8307	7	12.25	20.00	16.34	22.47	3.00	24.00	3.00	30.00	45.3
8308	8	14.00	20.00	18.09	22.47	3.00	24.00	3.00	30.00	47.4
8309	9	15.75	20.00	19.84	22.47	3.00	24.00	3.00	30.00	49.7
8310	10	17.50	20.00	21.59	22.47	3.00	24.00	3.00	30.00	51.1
8311	11	19.25	20.00	23.34	22.47	3.00	24.00	3.00	30.00	52.9
8312	12	21.00	20.00	25.09	22.47	3.00	24.00	3.00	30.00	54.7
8313	13	22.75	20.00	26.84	22.47	3.00	24.00	3.00	30.00	56.5
8314	14	24.50	20.00	28.59	22.47	3.00	24.00	3.00	30.00	58.2
8315	15	26.25	20.00	30.34	22.47	3.00	24.00	3.00	30.00	62.3
8316	16	28.00	20.00	32.09	22.47	3.00	24.00	3.00	30.00	63.6
8317	17	29.75	20.00	33.84	22.47	3.00	24.00	3.00	30.00	65.1
8318	18	31.50	20.00	35.59	22.47	3.00	24.00	3.00	30.00	67.2
8319	19	33.25	20.00	37.34	22.47	3.00	24.00	3.00	30.00	68.9
8320	20	35.00	20.00	39.09	22.47	3.00	24.00	3.00	30.00	70.7

ECS Composites

8000 Series - TSC Composite Rackmount Cases

Features and Performance Highlights

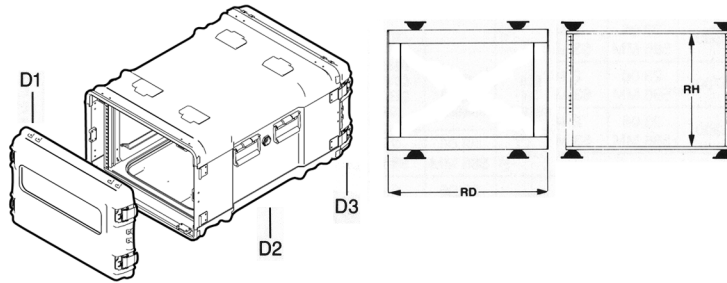


ECS Case Part Number	Rack Height (Units)	Rack Height Inside (RH) (Inch)	Flange To Flange Depth (RD) (Inch)	Outside Case Height (Inch)	Outside Case Width (Inch)	Front Cover Depth (D1) (Inch)	Center Body Depth (D2) (Inch)	Rear Cover Depth (D3) (Inch)	Overall Outside Depth (Inch)	Case Weight (Lb)
8503	3	5.25	24.00	9.34	22.47	3.00	28.50	3.00	34.50	41.7
8504	4	7.00	24.00	11.09	22.47	3.00	28.50	3.00	34.50	43.6
8505	5	8.75	24.00	12.84	22.47	3.00	28.50	3.00	34.50	45.7
8506	6	10.50	24.00	14.59	22.47	3.00	28.50	3.00	34.50	50.2
8507	7	12.25	24.00	16.34	22.47	3.00	28.50	3.00	34.50	51.8
8508	8	14.00	24.00	18.09	22.47	3.00	28.50	3.00	34.50	53.4
8509	9	15.75	24.00	19.84	22.47	3.00	28.50	3.00	34.50	55.2
8510	10	17.50	24.00	21.59	22.47	3.00	28.50	3.00	34.50	57.1
8511	11	19.25	24.00	23.34	22.47	3.00	28.50	3.00	34.50	58.6
8512	12	21.00	24.00	25.09	22.47	3.00	28.50	3.00	34.50	61.6
8513	13	22.75	24.00	26.84	22.47	3.00	28.50	3.00	34.50	62.8
8514	14	24.50	24.00	28.59	22.47	3.00	28.50	3.00	34.50	64.7
8515	15	26.25	24.00	30.34	22.47	3.00	28.50	3.00	34.50	70.1
8516	16	28.00	24.00	32.09	22.47	3.00	28.50	3.00	34.50	72.0
8517	17	29.75	24.00	33.84	22.47	3.00	28.50	3.00	34.50	73.8
8518	18	31.50	24.00	35.59	22.47	3.00	28.50	3.00	34.50	75.7
8519	19	33.25	24.00	37.34	22.47	3.00	28.50	3.00	34.50	77.5
8520	20	35.00	24.00	39.09	22.47	3.00	28.50	3.00	34.50	76.3

ECS Composites

8000 Series - TSC Composite Rackmount Cases

Features and Performance Highlights



ECS Case Part Number	Rack Height (Units)	Rack Height Inside (RH) (Inch)	Flange To Flange Depth (RD) (Inch)	Outside Case Height (Inch)	Outside Case Width (Inch)	Front Cover Depth (D1) (Inch)	Center Body Depth (D2) (Inch)	Rear Cover Depth (D3) (Inch)	Overall Outside Depth (Inch)	Case Weight (Lb)
8903	3	5.25	30.00	9.34	22.47	3.00	34.00	3.00	40.00	48.3
8904	4	7.00	30.00	11.09	22.47	3.00	34.00	3.00	40.00	50.2
8905	5	8.75	30.00	12.84	22.47	3.00	34.00	3.00	40.00	52.1
8906	6	10.50	30.00	14.59	22.47	3.00	34.00	3.00	40.00	55.3
8907	7	12.25	30.00	16.34	22.47	3.00	34.00	3.00	40.00	57.2
8908	8	14.00	30.00	18.09	22.47	3.00	34.00	3.00	40.00	59.1
8909	9	15.75	30.00	19.84	22.47	3.00	34.00	3.00	40.00	62.4
8910	10	17.50	30.00	21.59	22.47	3.00	34.00	3.00	40.00	64.3
8911	11	19.25	30.00	23.34	22.47	3.00	34.00	3.00	40.00	66.1
8912	12	21.00	30.00	25.09	22.47	3.00	34.00	3.00	40.00	69.2
8913	13	22.75	30.00	26.84	22.47	3.00	34.00	3.00	40.00	71.1
8914	14	24.50	30.00	28.59	22.47	3.00	34.00	3.00	40.00	73.0
8915	15	26.25	30.00	30.34	22.47	3.00	34.00	3.00	40.00	75.0
8916	16	28.00	30.00	32.09	22.47	3.00	34.00	3.00	40.00	78.9
8917	17	29.75	30.00	33.84	22.47	3.00	34.00	3.00	40.00	80.9
8918	18	31.50	30.00	35.59	22.47	3.00	34.00	3.00	40.00	82.7
8919	19	33.25	30.00	37.34	22.47	3.00	34.00	3.00	40.00	84.6
8920	20	35.00	30.00	39.09	22.47	3.00	34.00	3.00	40.00	86.5